

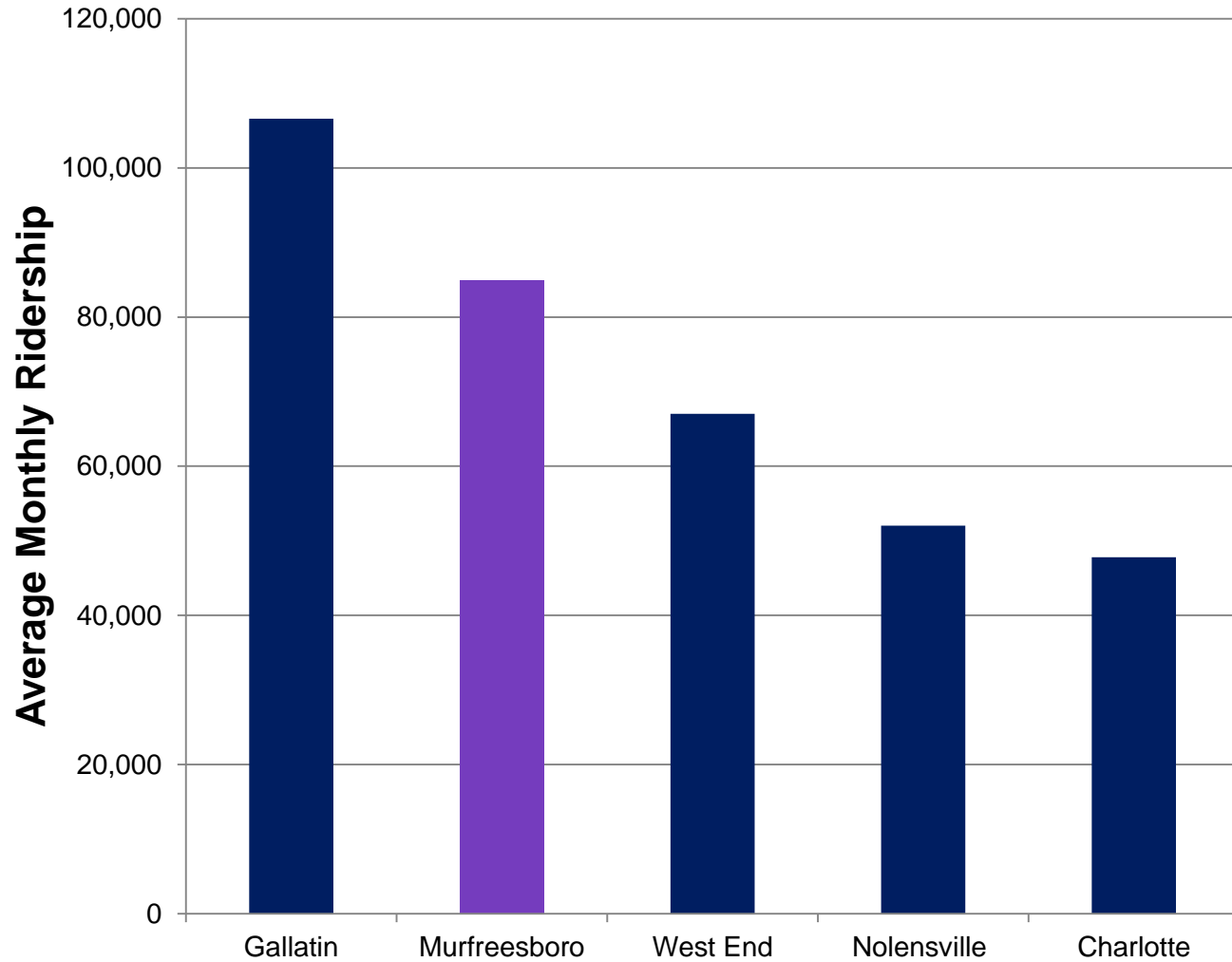
Murfreesboro Pike Corridor Improvements

Scheduled for Spring 2019

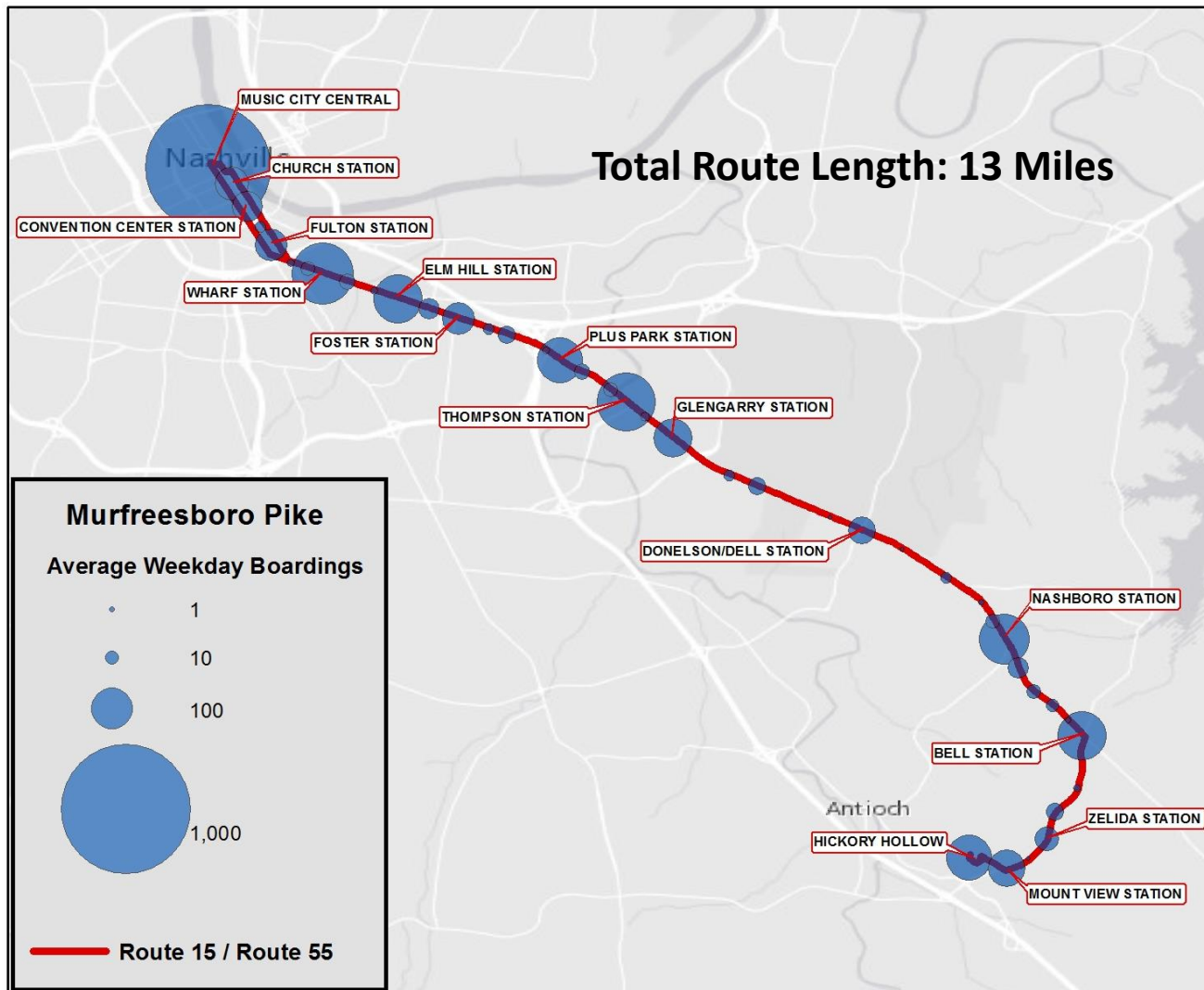
3/15/2019



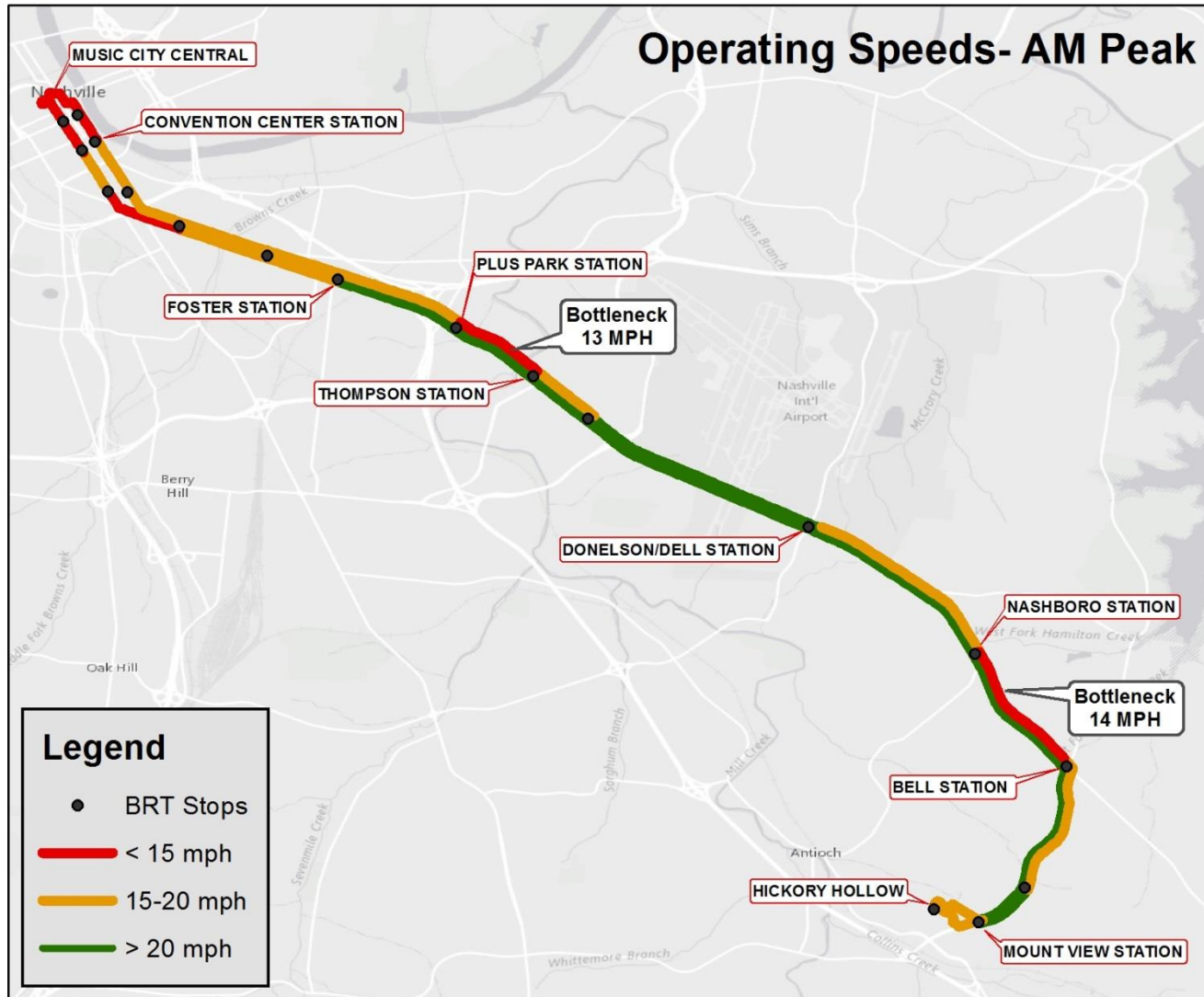
Highest Ridership Corridors



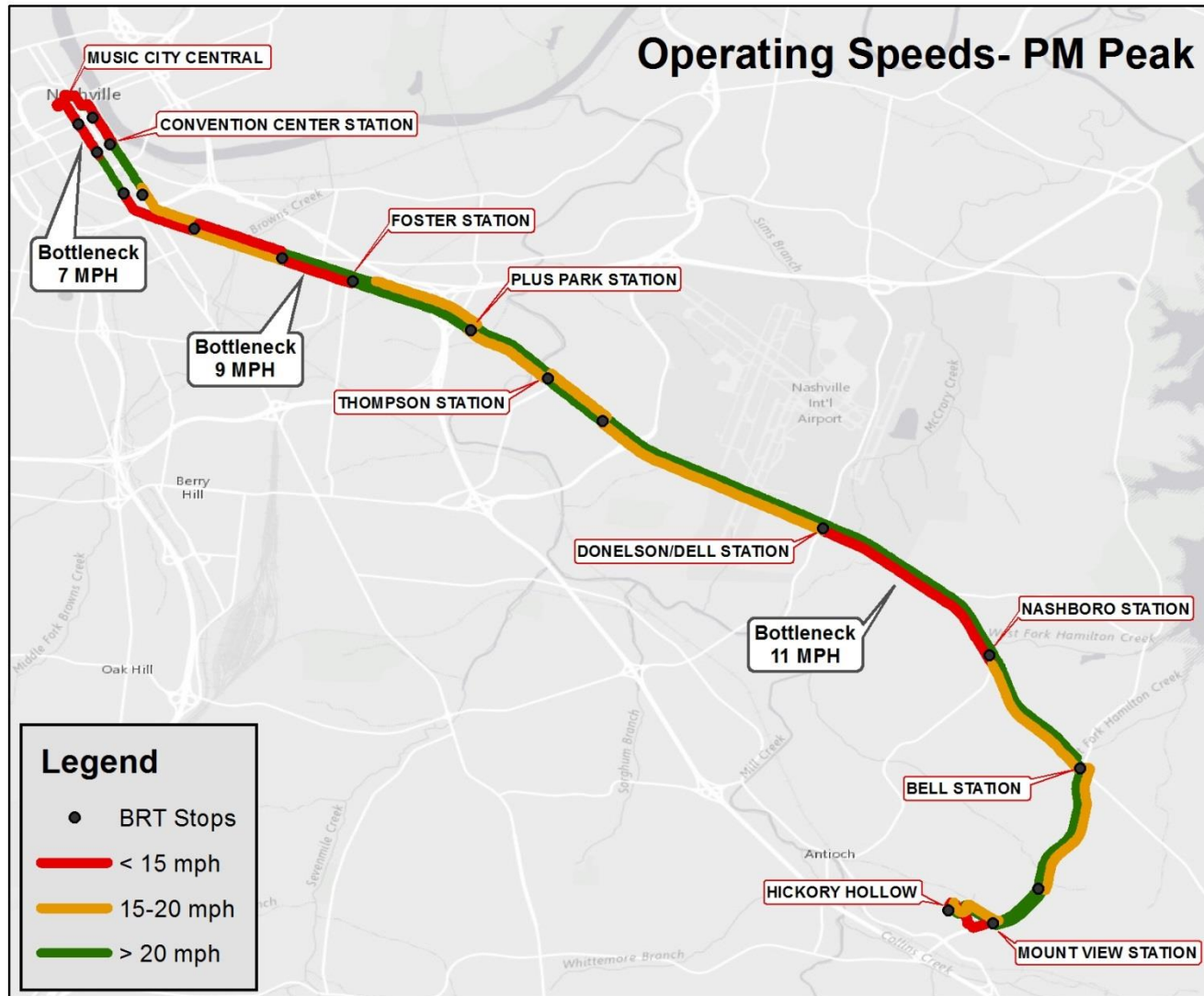
Boarding Activity by Station



Murfreesboro Travel Speeds—AM Peak



Murfreesboro Travel Speeds—PM Peak



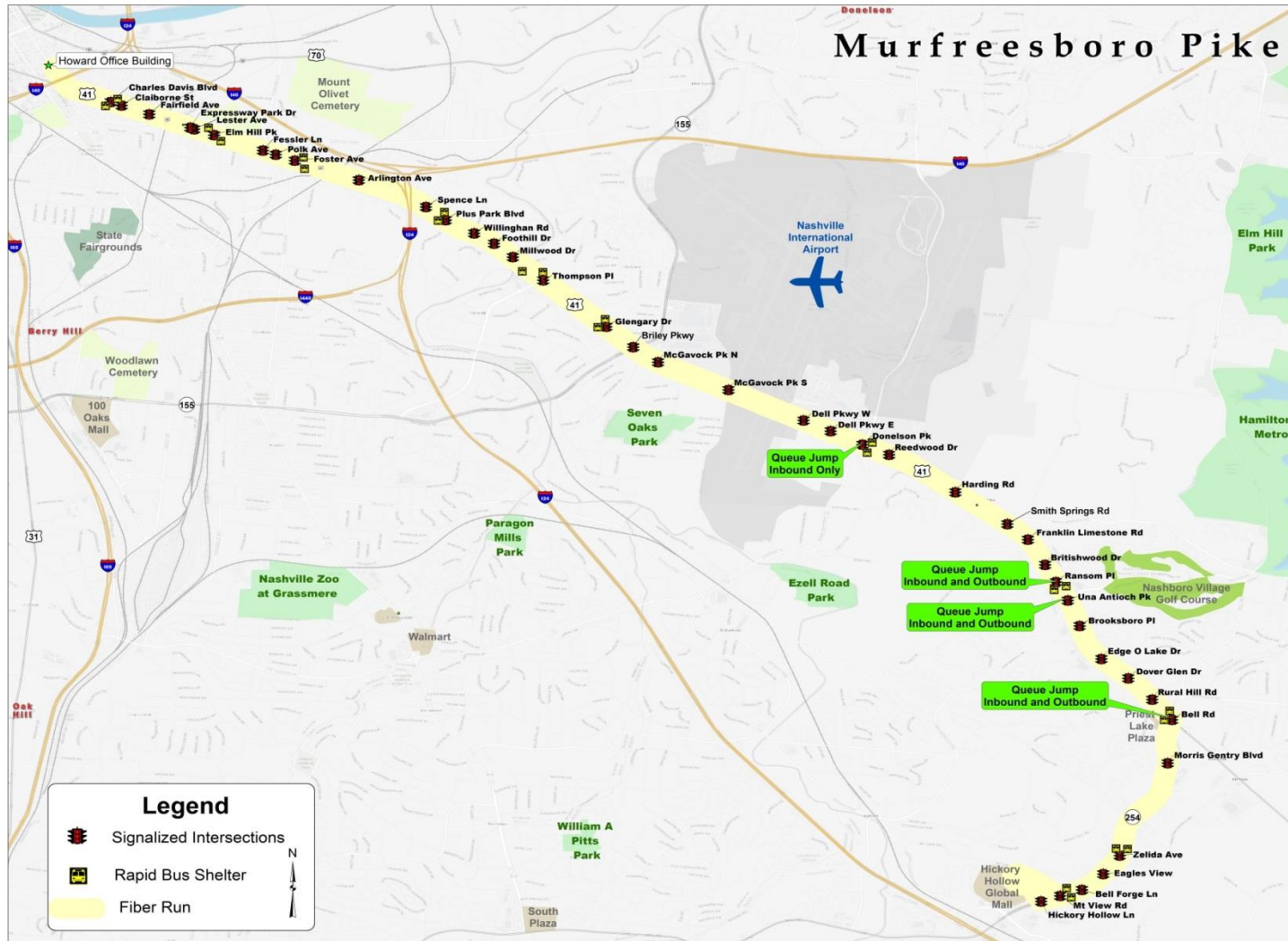
Project Goals

- Improve transit operations
 - Improve travel times
 - Improve travel time reliability
 - Increase ridership
- Upgrade aging signal infrastructure
- Improve pedestrian access along the corridor

Specific Enhancements

- Transit Signal Priority (TSP)
- Queue Jumps
 - Bus only lanes
 - Shared right turn/bus lane
 - Left turn/bus only lane
- Pedestrian Enhancements
 - ADA accessibility
 - Sidewalk connections to bus stops
- Intersection Improvements
 - Improve signals
 - Better traffic flow
 - More crosswalks

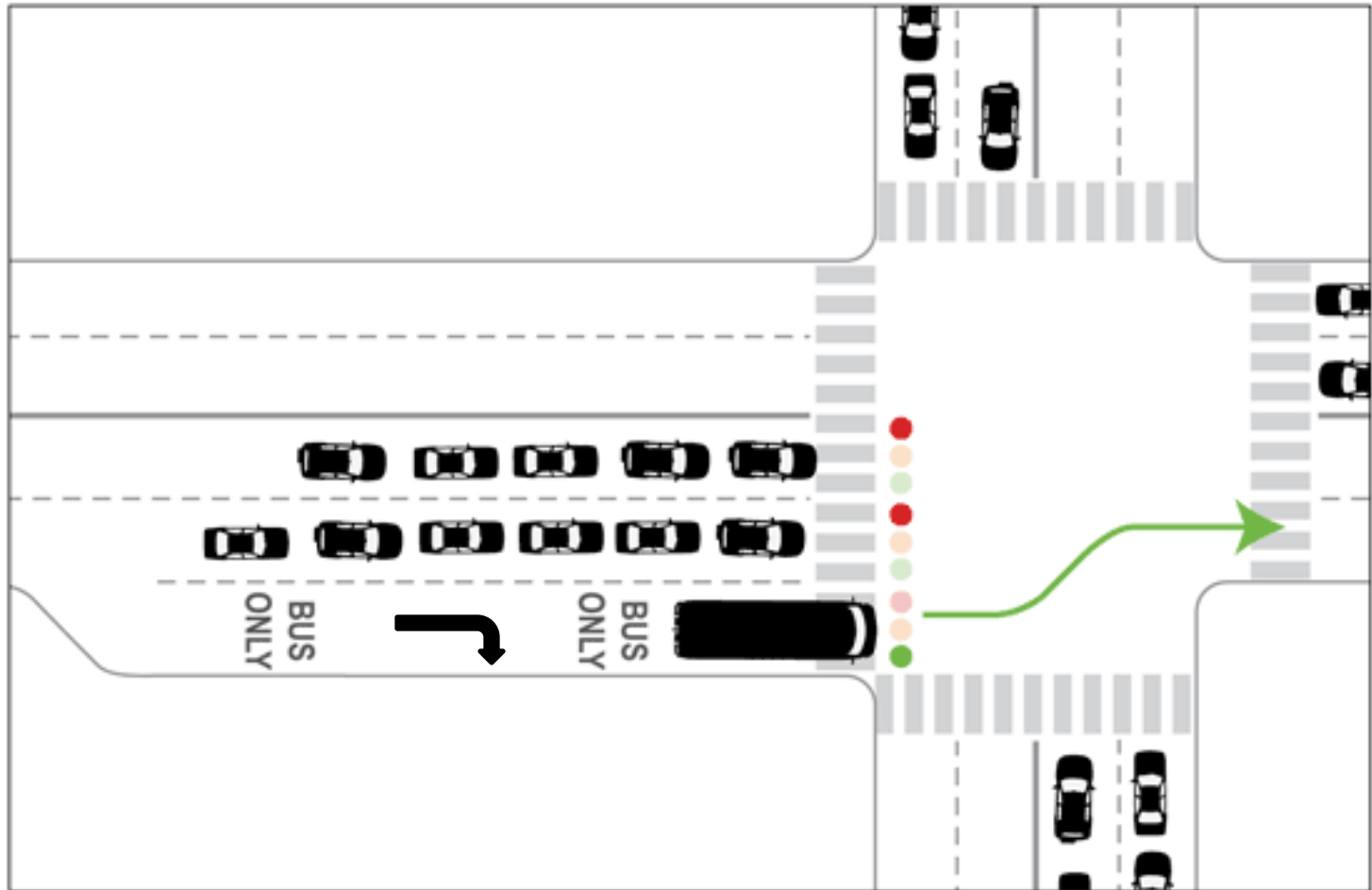
Full Corridor Specifics



Intersection Details

- Bus Only Lane
 - Donelson Inbound
- Shared Right Turn/Bus Lane
 - Una-Antioch Outbound
 - Una-Antioch Inbound
 - Ransom Place Inbound
- Exclusive Left Turn/Bus Only Lane
 - Bell Rd. Inbound

TSP Operational Example - *Right Turn/Bus Lane*



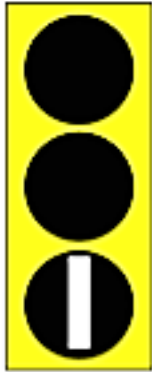
Queue Jump Demonstration

<https://www.youtube.com/watch?v=I9QsemSE8Y4>



Bus Signals

- Transit-Only signals use geometric shapes and white indications to distinguish from general traffic signals



Transit-Only
“Go”

Acting as a Green Light
for transit



Transit-Only
“Phase Ending”

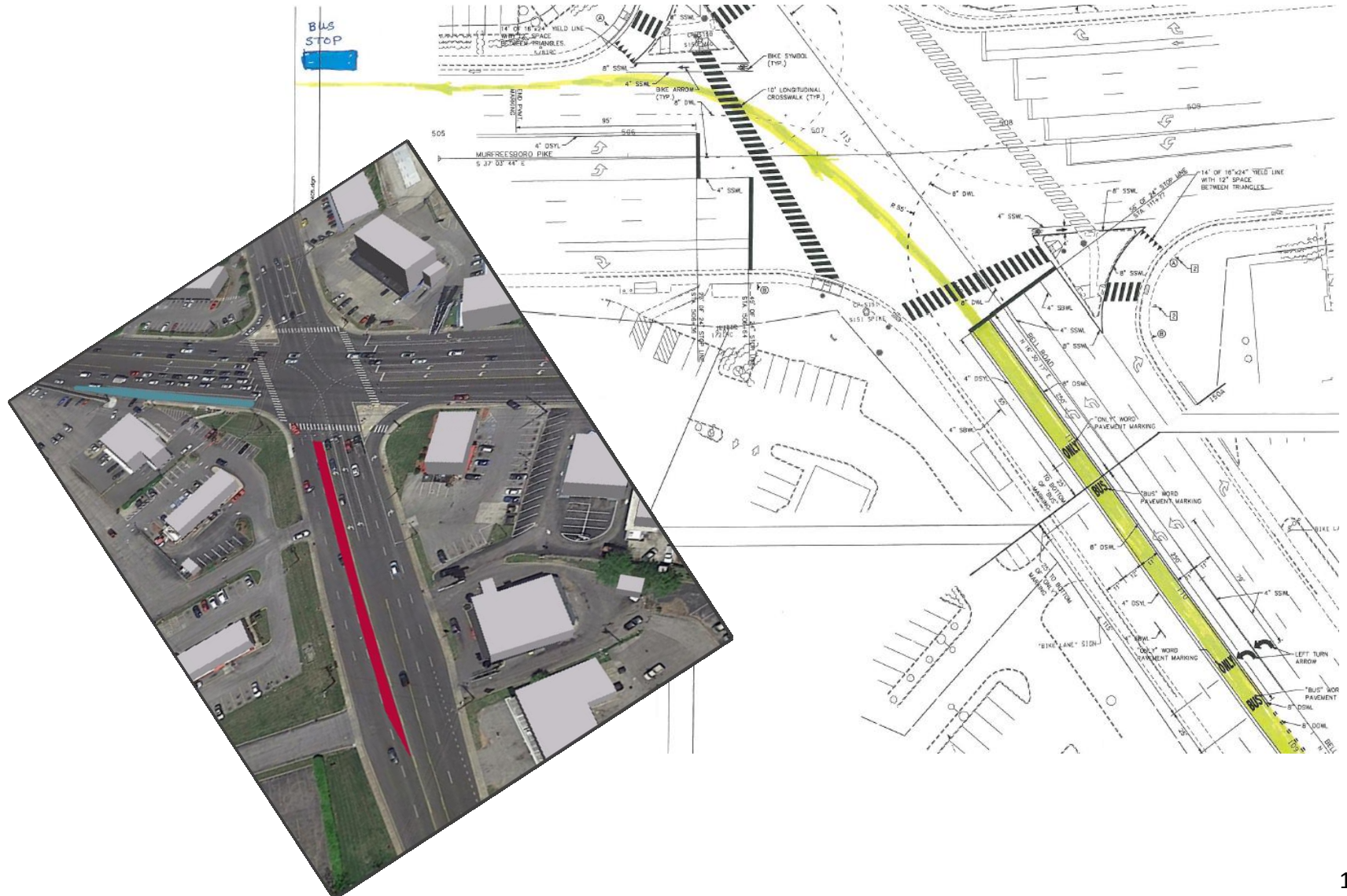
Acting as a Yellow Light
for transit



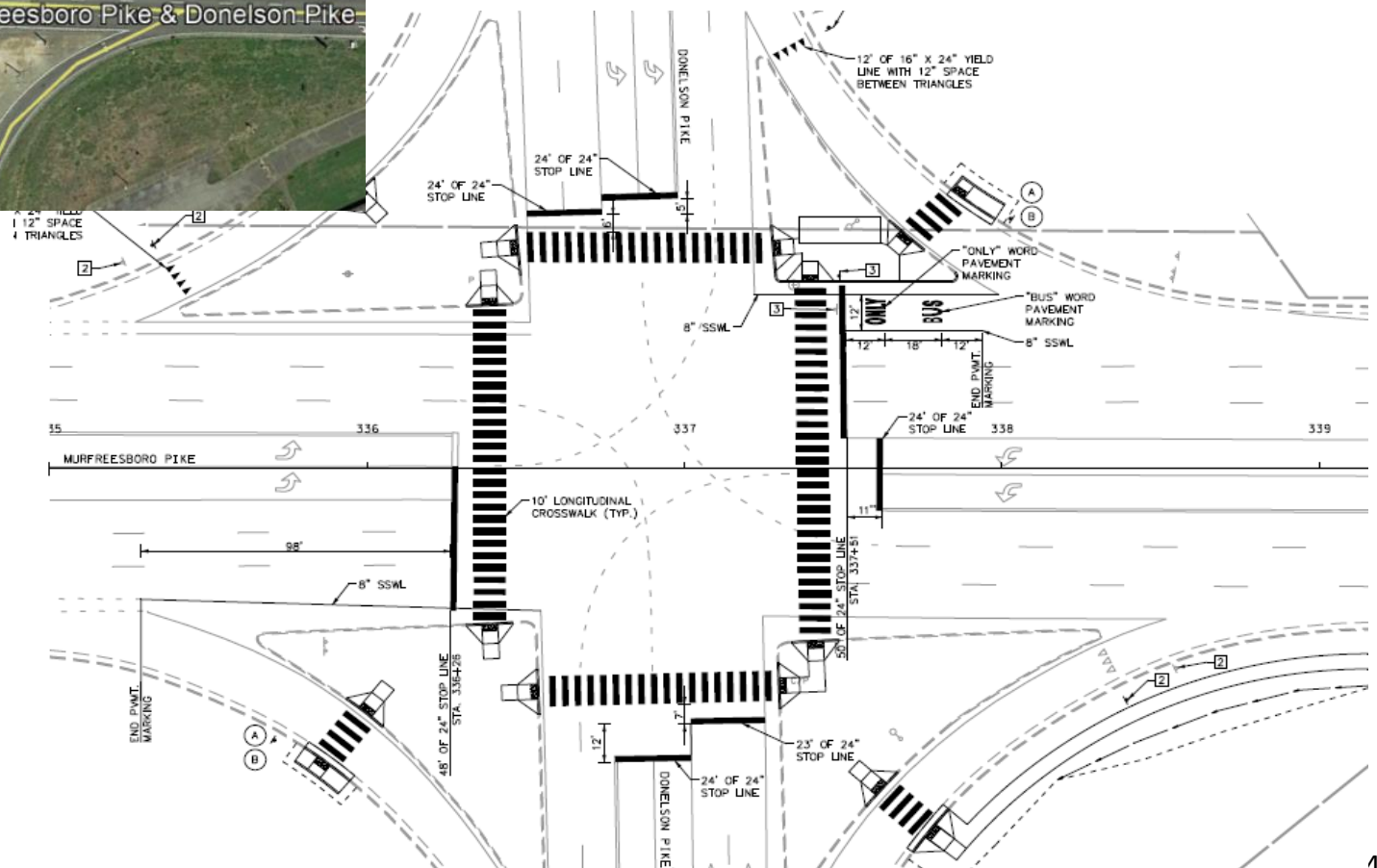
Transit-Only
“Stop”

Acting as a Red Light
for transit

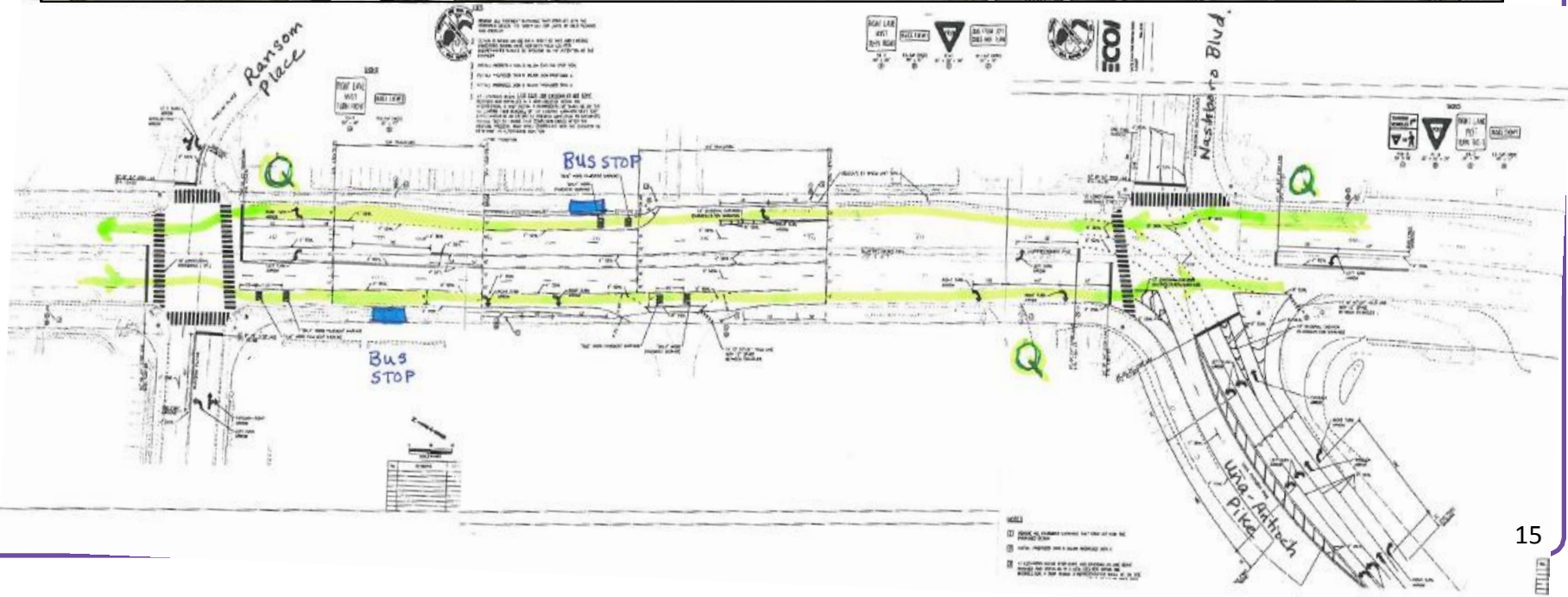
Bell Road Bus Only Left Turn



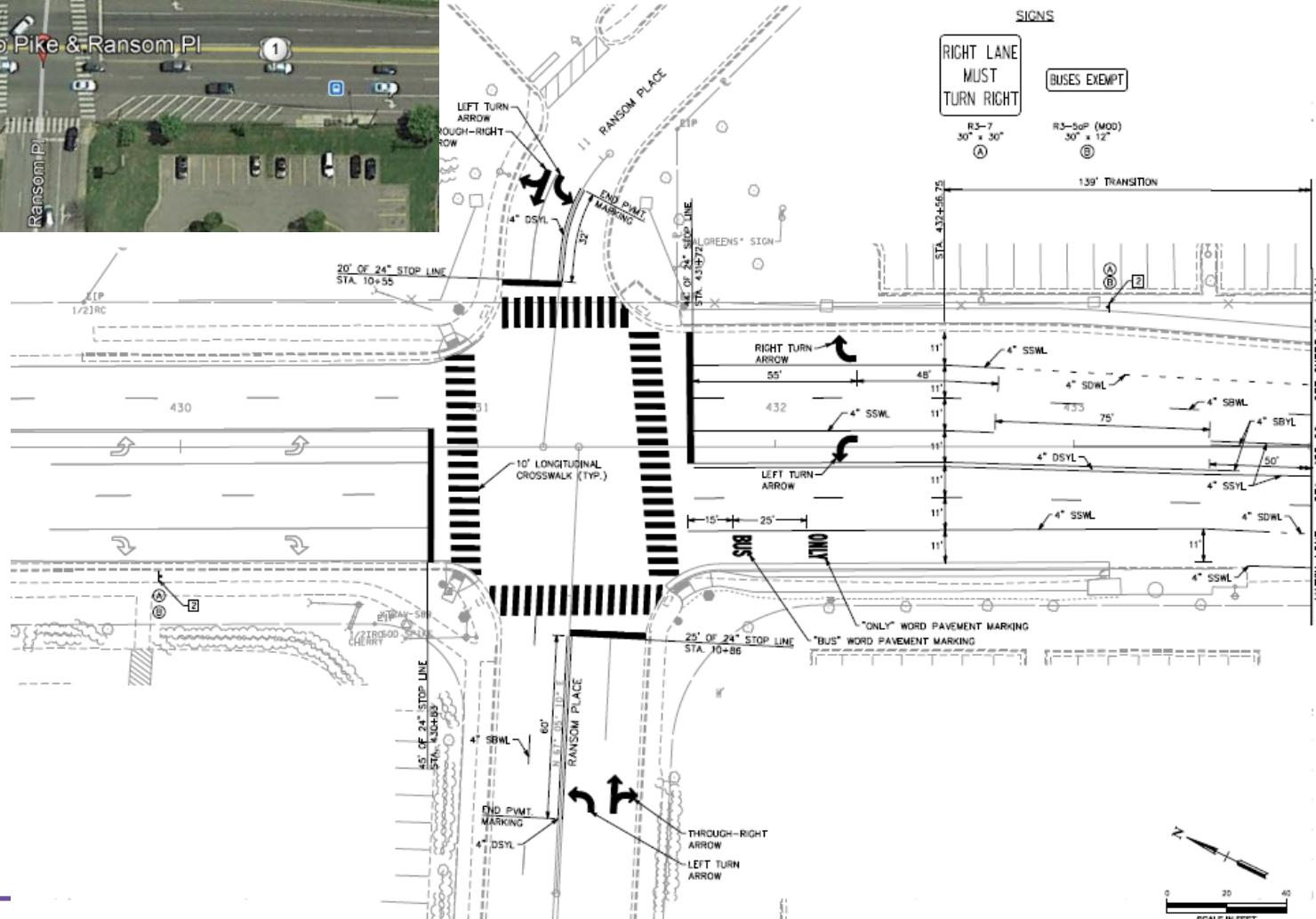
Donelson Bus Only-Queue Jump



Ransom Pl. and Una-Antioch/Nashboro



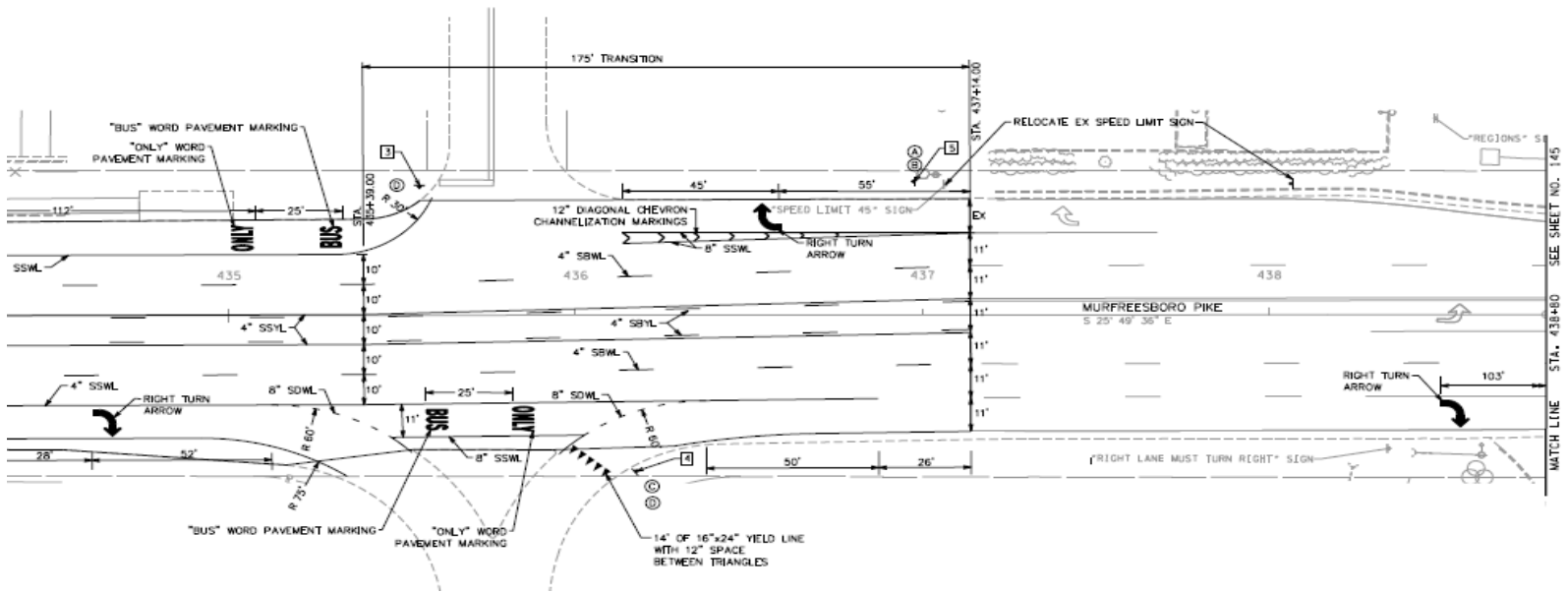
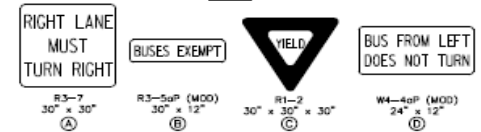
Murfreesboro and Ransom Place



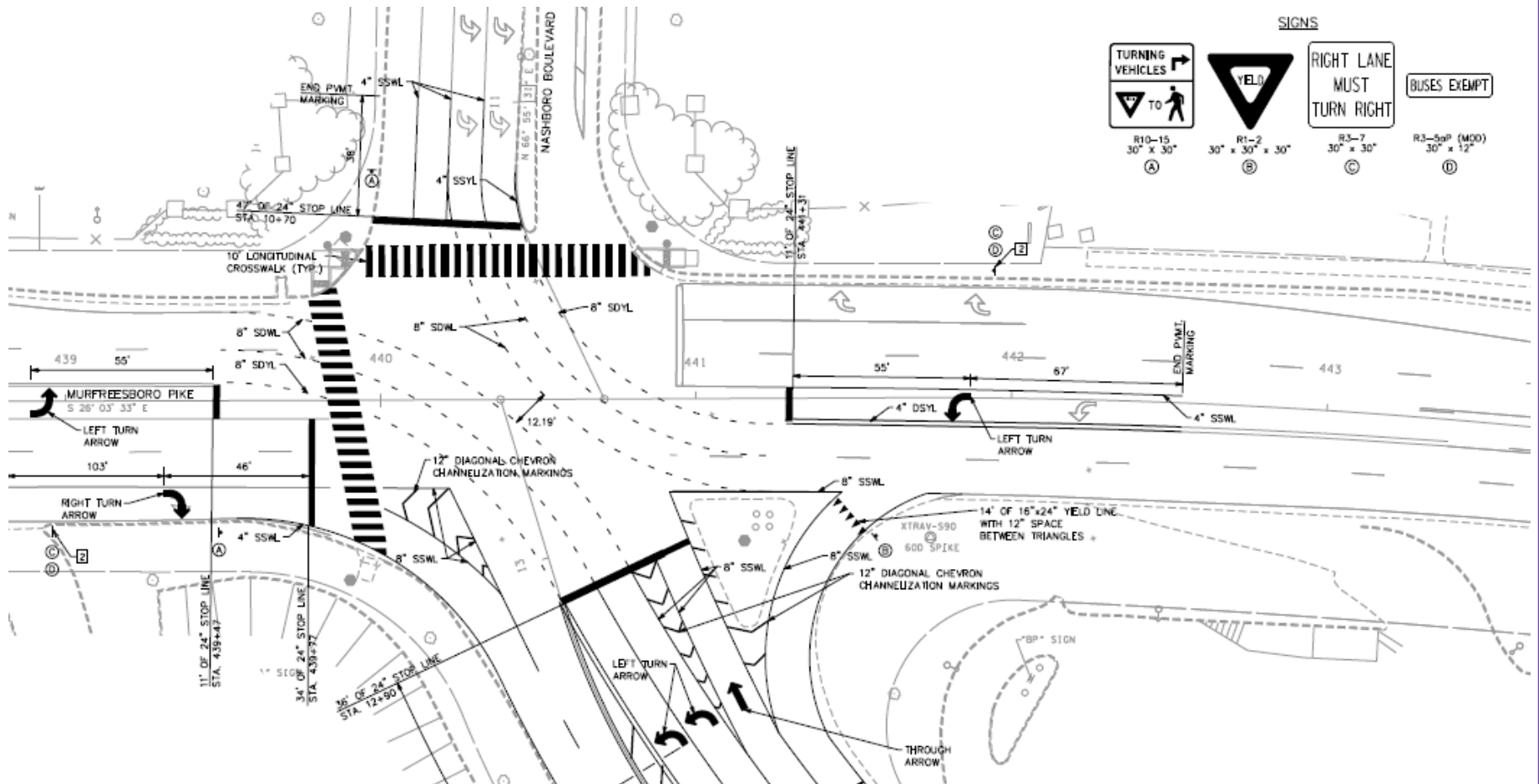
Ransom Pl. and Una-Antioch/Nashboro



SIGNS



Murfreesboro and Una-Antioch



Intersection Activation

- Queue Jumps –
 - Testing – starting – April 2019
 - Full Activation – May 2019

Ensuring Operational Success

- Public Outreach and Education
 - News stories
 - Intersection signage
- Operator Training
 - Classroom training
 - Road testing
- Supervisor positioning at intersections
- Law Enforcement
 - Guidance in the Manual on Uniform Traffic Control Devices - MUTCD, Ch. 10 D